



Standard and optional equipment available may vary for individual markets. Please enquire at your dealers, as specifications and illustrations may refer to models not available in your region. Suzuki Motor Corporation reserves the right to change, without notice, prices, colours, materials, equipment, specifications and models, and also to discontinue models.

All photographs in this brochure were taken with relevant permission. Images of the vehicles without number plates on public roads are composite photos.



Suzuki Motor Corporation
300 Takatsuka-cho, Chuo-ku, Hamamatsu-shi, Shizuoka 432-8611 JAPAN
www.globalsuzuki.com

ACROSS BROCHURE (M) 2509



ACROSS





THE NEW ACROSS. ART OF EXPRESSION.

Get ready to turn city streets into your canvas with a drive that inspires your style. Meet the new Across — an SUV that redefines urban cool with its expressive, modern design.

Clean lines and sharp styling make a bold statement wherever you go. Step inside a thoughtfully crafted cabin that blends simplicity with modern elegance. Innovative features keep your drives smart, while a dynamic yet efficient driving performance ensures an enjoyable experience behind the wheels. A class apart, the new Across is designed to express who you are.



IMPRESS ON THE GO

Stand out with the new Across that features a progressive design with a bold, aesthetic stance. Its chiselled front, distinctive three-dimensional headlamps, and connected rear LED tail lamps create a bold and memorable road presence – complemented by sleek alloy wheels, wrap-around windows, and aerodynamic contours. The Across makes a great impression from every angle, in every detail.



A SPACE DESIGNED AROUND YOU

The interior is designed with crafted detailing and modern features to elevate every drive. The spacious cabin gives a high-quality expression with a 3D texturing pattern and copper detailing. The ambient lighting*, customisable in 64 colours, enhances driving pleasure and makes every journey feel uniquely yours.

*GLX grade only.



10.25-inch meter display with digital speedometer

The meter display comes with a multi-information colour display that shows real-time information about the vehicle behaviour and operation. The speedometer can be set in two different modes, classic and standard. The centre area displays the speed and ADAS (Advanced Driver-Assistance Systems) details. On either side of the centre display, you can customise the screen to display a variety of information such as clock, media, turn-by-turn navigation and more, all controlled via the toggle switch mounted on the steering wheel.



Default screen display



Vehicle driving information

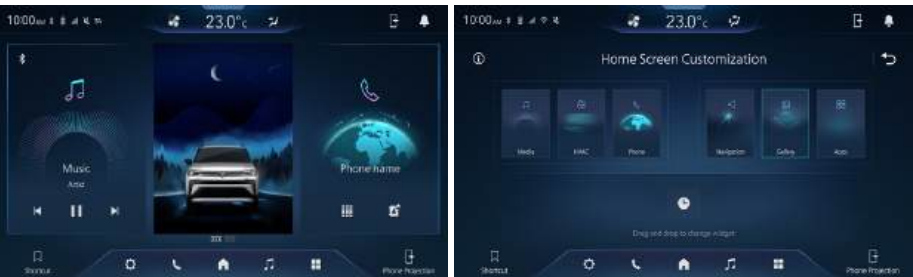


360 view camera



The 360 view camera system* features four cameras—at the front, rear, and both sides which are connected to the centre display. The system allows for easy manoeuvrability through key functions including a 3D opening view for the driver to assess the surroundings, a top view for safer parking, and visual and audio alerts to warn of nearby objects.

*GLX grade only.

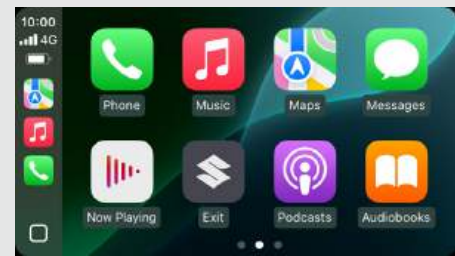


10.1-inch display audio

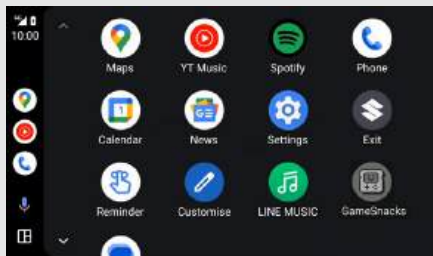
The 10.1-inch HD capacitive touchscreen delivers a quick and accurate response. It features smartphone linkage for both Apple CarPlay™ and Android Auto™ through USB or Wi-Fi, Bluetooth® Hands-free call, and Bluetooth music playback and shows various vehicle status. The home screen is customisable by setting often-used function.



Apple CarPlay® lets drivers access the voice-activated Siri® personal assistant on their iPhone to get directions, make calls, play music and send and receive messages without taking their hands off the steering wheel.



Android Auto™ makes the time drivers spend on the road safer and more fun by letting them use hands-free help from Google Assistant to access a wide variety of supported apps on their Android™ smartphone.



*Apple CarPlay is supported in the countries listed at the following link: <https://www.apple.com/ios/feature-availability/#applecarplay-applecarplay>
For more details, including iPhone models and iOS versions compatible with Apple CarPlay, see: <https://www.apple.com/ios/carplay/>

*Apple, Apple CarPlay, iPhone and Siri are trademarks of Apple Inc., registered in the U.S. and other countries.

*Wi-Fi is a registered trademark of Wi-Fi Alliance®.

*Android Auto is supported in the countries listed at the following link: <https://www.android.com/auto/>
To use Android Auto on your car display, you'll need an Android phone running Android 8 or higher, an active data plan, and the Android Auto app.

*Wireless use of Android Auto requires a compatible Android 11.0+ phone and compatible active data plan. Check g.co/androidauto/requirements for compatibility. Some features and devices may not be available in all countries. Subject to availability.

*Google, Android, Android Auto, Google Maps and other marks are trademarks of Google LLC.

*Bluetooth is a registered trademark of Bluetooth SIG, Inc.



CONVENIENCE FOR EVERY NEED

No matter where you're heading, the new Across makes every journey effortless. With space for all your needs – from daily essentials to adventure gears – and features that add to your convenience.



Qi* wireless charger



USB ports (type C)



Glovebox



Console box tray with drink holders



Front armrest storage



Front door pocket



Rear armrest with glass holder



Rear door pocket



Panoramic Sunroof

The panoramic sunroof* offers an exhilarating open-roof experience with two glass panels (one in front of the other) which can both be slid open to provide one of the biggest opening sunroofs in its class. Additionally, the sunroof is equipped with a sunshade that completely blocks light when closed.

*Optional for the GLX grade.



Infinity sound system

The GLX grade is equipped with an Infinity sound system, comprising four door speakers, one centre speaker, two tweeters and a subwoofer. The reproduced sound is tuned specifically for the Across by a digital signal processor in the amplifier. With eight speakers strategically placed inside the vehicle, the Infinity sound system delivers excellent transient response, high output power, a wide dynamic range, fast response, and strong impact. It perfectly captures the essence of various music genres, making you feel as if you're in a concert hall while driving.



Head-up display

The combiner type head-up display* lets you read updates about your vehicle by projecting an array of information such as speed, instant fuel economy and intersection navigation** without taking your eyes off the road.

*GLX grade only.

**Intersection navigation is also shown on the centre display when the smartphone is connected via Wi-Fi.

*Qi and Qi mark are trademarks of Wireless Power Consortium (WPC).

YOUR DAILY DRIVES MADE COMFORTABLE

The thoughtful design and innovative features come together to make every journey smooth and hassle-free. From easy access to a refined driving experience, it's all built to help you relax and enjoy the ride.



Electric parking brake

The electric parking brake system* can be set or released via a fingertip switch. This eliminates concerns about insufficient engagement when parking and about driving off with the brakes partially engaged afterwards.

*AT model only.

Set

Pulling the switch will engage parking brake (EPB). When AUTO mode is on, the parking brake can be engaged simply by positioning the drive shift to P.

*AUTO mode is off by default. To switch it on, pull and hold the EPB switch for at least 5 seconds while brake pedal is depressed.

Release

Pressing the switch while depressing the brake pedal will disengage parking brake. The parking brake can also be disengaged by depressing the accelerator pedal with the drive shift in D or R.

*Brake will not disengage if the driver's seatbelt is not buckled or the driver's door is open.

Luggage area with hands-free access

A large luggage space of 333 litres* not only adds utility but is also accessed easily with a simple motion of the foot beneath the rear bumper. The system is height-adjustable to suit your preference.

*Measured using the German Association of the Automotive Industry (VDA) method. (GLX with subwoofer - 333L, GL without subwoofer - 347L).



Automatic air conditioner with PM2.5 filter

Standard in all variants, the air conditioner features automatic temperature control which maintains the set cabin temperature. Along with cooling, the PM2.5 compatible air filters release clean air through vents placed at the front and the rear of the cabin.



Eight-way power seat

The eight-way adjustable power seat* can be operated easily through switch knobs on the side of the seat cushion, enabling effortless adjustments to find the ideal position.

*Driver's seat in GLX grade only.



Ventilated seats

The ventilated front seats* provide immediate cooling to their occupants by drawing in cool air from the air conditioner. The added ventilation also removes cabin stuffiness.

*GLX grade only.



Paddle shift

The paddle shift enables gear changes without the need for a manual clutch, enhancing the driving experience. Enjoy greater control over the vehicle's performance and responsiveness by manually upshifting or downshifting gears.



DRIVING PERFORMANCE REDEFINED

Get ready for an elevated driving experience. The powerful yet efficient performance delivers a smooth and confident ride, no matter where the road takes you.

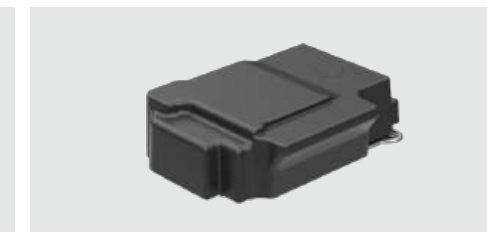
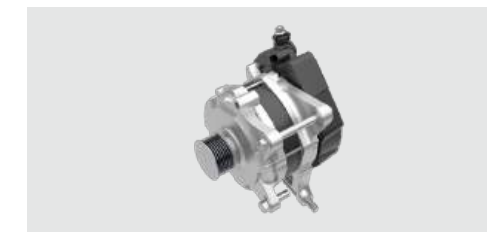


K15C DUALJET engine

The 1.5-litre engine delivers high efficiency, low emissions, strong output and torque. Excellent efficiency is achieved through various features. Dual fuel injectors are placed close to the intake valves and the compression ratio is raised for efficient fuel combustion, the combustion temperatures are lowered and pumping loss is reduced by the cooled exhaust gas recirculation (EGR) system, and adoption of roller rocker arms for valve lifters reduces frictional speed.

SHVS mild hybrid system

The 12V SHVS mild hybrid system incorporates an integrated starter generator (ISG), which performs as a generator as well as an electric motor, and a lithium-ion battery. In situations such as when starting from a standstill or accelerating, the system helps suppress fuel consumption by providing electric motor assist using electricity generated through regenerative braking.



Transmission

The new Across has a choice of 5-speed manual transmission and 6-speed automatic transmission. Both are optimised for the best balance of performance and fuel efficiency. A straight type of shift pattern is adopted for the automatic transmission for simple and easy operation while the manual transmission features light, smooth and precise gear shifting with the convergent locating system.



Suspension and steering

Suspensions are finely tuned for sporty handling and superb ride quality, delivering precise and responsive control. The steering calibration ensures a lighter feel for effortless city manoeuvring, while providing proper effort buildup for confident handling at highway cruising speeds.



MATCH YOUR MODE TO THE ROAD

Enjoy all-terrain freedom in multiple ways with ALLGRIP SELECT – Suzuki’s proprietary 4X4 technology. Choose from four 4WD and enjoy every journey with confidence and strong performance.

ALLGRIP SELECT



Auto

Prioritises fuel economy in typical driving conditions, only switching to 4X4 when slippage is detected.



Sport

Increases cornering performance by allocating additional torque to the rear wheels. Sport mode also optimises accelerator-torque characteristics to increase engine response.



Snow

Provides excellent stability and enhanced traction, especially during acceleration, on snow, unpaved or other slippery surfaces.



Lock

Delivers maximum torque to the rear wheels to get you out of sticky situations such as deep snow, mud or sand. Automatically switches to snow mode at 60 km/h.



Hill-hold control

The hill-hold control function makes hill start easier by preventing the car from rolling backward for up to two seconds when the driver moves his or her foot from the brake pedal to the accelerator pedal.



Hill-descent control*

Automatic brake control on a downhill road suppresses the acceleration and helps move forward at a constant speed (app. 10 km/h). This enables the driver to concentrate on steering operation and supports stable downhill driving.

*4WD model only.

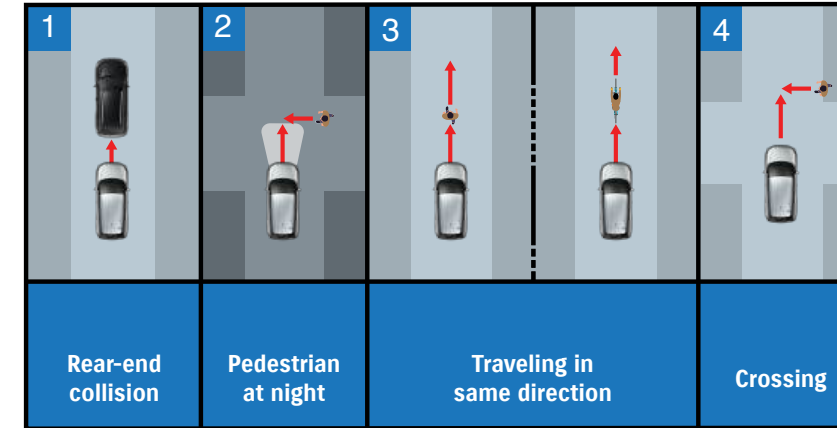


SAFETY MEETS INNOVATION

With Suzuki Safety Support, a host of advanced features and smart technology work together to make every day driving safer.

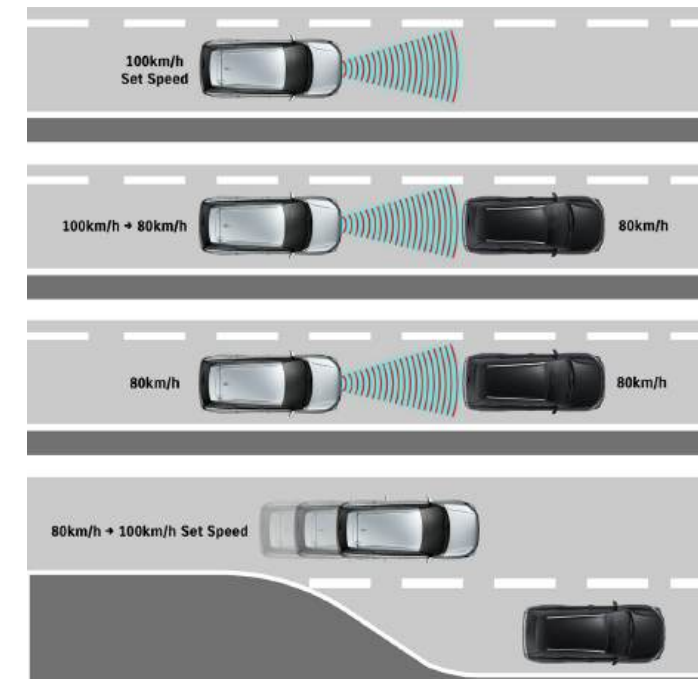
*There is a limit to the ability of cameras and sensors to detect obstacles, lanes and traffic signs. Please do not rely on this system alone. Always drive safely.
Vehicle-to-vehicle distance varies depending on vehicle speed.

SUZUKI
Safety Support
Preventive safety technology



Adaptive Cruise Control (ACC)

Adaptive cruise control helps reduce driver fatigue on long trips and when driving on highways. When the ACC switch is engaged, the system uses a millimetre-wave radar and monocular camera to detect the presence of the vehicles ahead and determines the distance to the vehicle ahead, accelerates or decelerates as needed to maintain a set distance from the vehicle ahead. If the road ahead is clear, it will maintain the speed at which the vehicle was travelling when the switch was engaged.



1. Constant speed control

If there are no vehicles ahead, the speed set by the driver is maintained.

2. Deceleration control

Speed is reduced to match the speed of the vehicle ahead.

3. Following speed control

Speed is maintained to match the speed of the vehicle ahead.

4. Acceleration control

If the vehicle in front departs from the lane and there is sufficient distance from any additional vehicle ahead, the Across automatically reaccelerates to the set speed.

Dual Sensor Brake Support II (DSBS II)

Millimetre-wave radar and a monocular camera are employed to detect vehicles, motorcycles, bicycles*, and pedestrians directly or diagonally ahead of the vehicle. If a collision seems possible, audio and visual warnings are issued to alert the driver. If the driver brakes with insufficient force, brake assist automatically engages to help slow the vehicle. And if the probability of a collision increases, the system automatically applies brake force to help reduce impact force and mitigate damage.

*Daytime only.

Lane Keep Assist (LKA)

When driving, LDP detects the left and right lane demarcation lines and predicts the vehicle's path. If the system determines that there is a high possibility of the vehicle deviating from the lane due to driver distraction, the system alerts the driver by vibrating the steering wheel or sounding an audio alert. It provides steering assistance to help the driver return to the centre of the lane.



Lane Departure Prevention (LDP)

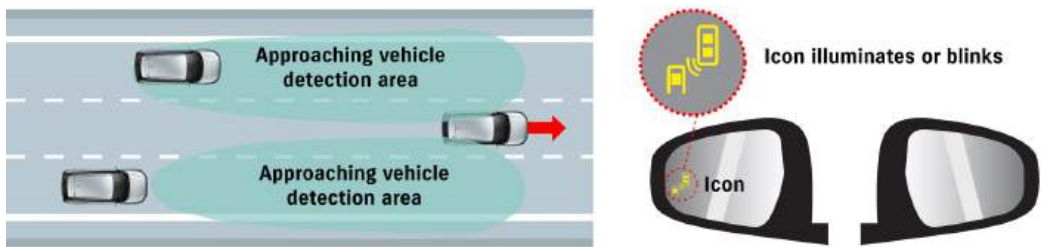
When driving, LDP detects the left and right lane demarcation lines and predicts the vehicle's path. If the system determines that there is a high possibility of the vehicle deviating from the lane due to driver distraction, the system alerts the driver by vibrating the steering wheel or sounding an audio alert. It provides steering assistance to help the driver return to the centre of the lane.





Blind Spot Monitor (BSM)

The blind spot monitor uses millimetre-wave radar sensors in the rear bumper to detect vehicles located in or approaching the rear blind spots on either side of the vehicle. When a vehicle is detected, a warning icon appears in the door mirror on the side that the vehicle is approaching. If the driver activates the turn signal on that side, the icon flashes an audio warning sound.



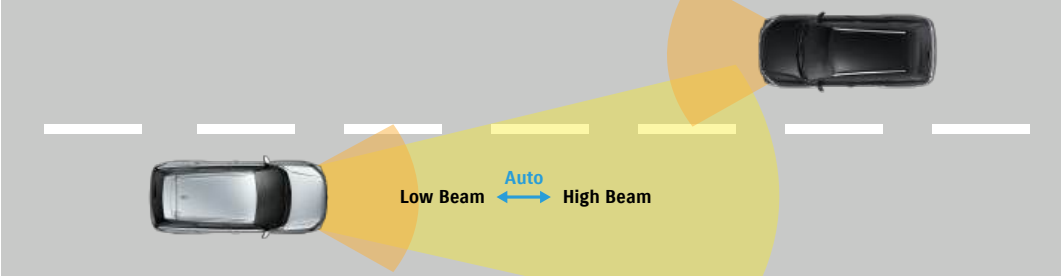
Rear Cross Traffic Alert (RCTA)

RCTA is a supplementary safety feature that uses blind spot monitor to detect and warn of vehicles approaching from the left or right when backing out of a parking space or other location.



High beam assist

When driving with the high beams on, the headlamps automatically switch to low beam when you experience oncoming traffic or vehicles driving ahead, or if you are travelling in a well-lit area. The headlamps automatically return to the high beams when the road ahead is clear and the surrounding area is poorly lit. (Active only at speeds above 30km/h when the light switch is set to Auto.)



Front and Rear Parking Sensor

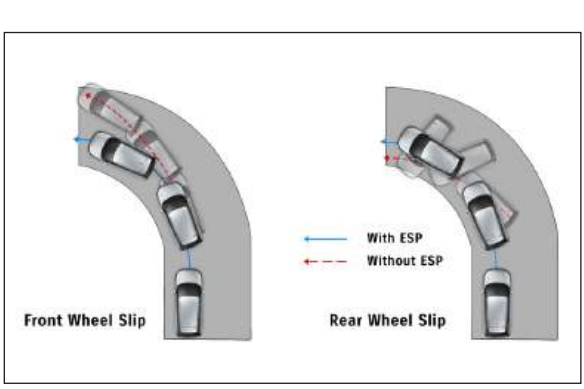
In the GLX grade, ultrasonic sensors in the front and rear bumper detect obstacles and warning beep sounds indicate the obstacle's proximity. In GL grade, only rear parking sensors are present.



Brake Hold

Brake pressure is maintained even if the driver releases his foot from the brake pedal after pressing it to stop the vehicle, keeping the vehicle stationary. The brake is released when the accelerator pedal is depressed during holding, allowing the vehicle to start smoothly.

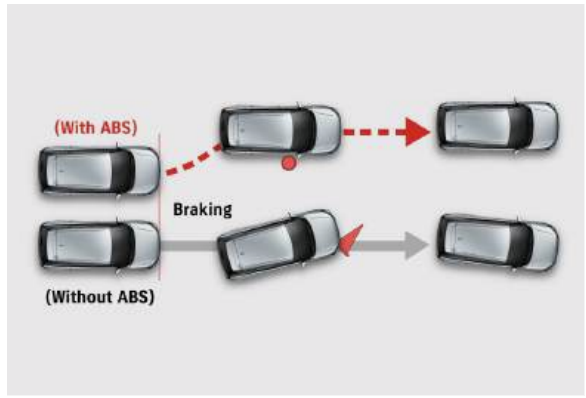
*If the brake hold state continues for about 3 minutes, the parking brake will be automatically applied.



ESP

ESP technology helps drivers control the vehicle during cornering, and assists them in maintaining traction when accelerating on loose or slippery road surfaces. If wheel slip is detected, the ESP system automatically regulates engine torque and selectively applies the brakes to help drivers maintain control.

*ESP is a registered trademark of Mercedes-Benz Group AG.



ABS with EBD

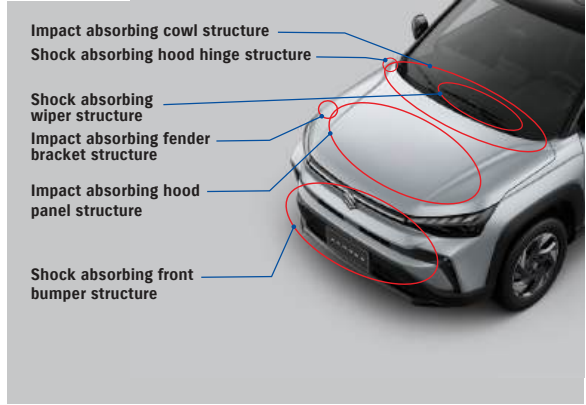
In an emergency braking situation, the Anti-lock Brake System (ABS) keeps tyres from locking up and supports the driver to maintain steering ability. In addition, Electric Brake Force Distribution (EBD) shortens the braking distance by optimally distributing force to the front and rear wheels if there is a large load, such as when the car is full of passengers.

*ABS and EBD are assistive technologies; it does not reduce the need to practice safe, careful driving.



6 Airbags

Airbags protect both the driver and passengers. The SUV comes with standard SRS airbags. Front SRS side airbags reduce impact to the chest in case of side collision and SRS curtain airbags reduce impact to the head in all grades.



Pedestrian Injury Mitigating Body

The structures of the vehicle's bonnet, front windscreen wiper area, front bumper and other parts absorb impact with the aim of mitigating head and leg injuries in the event of a collision with a pedestrian.